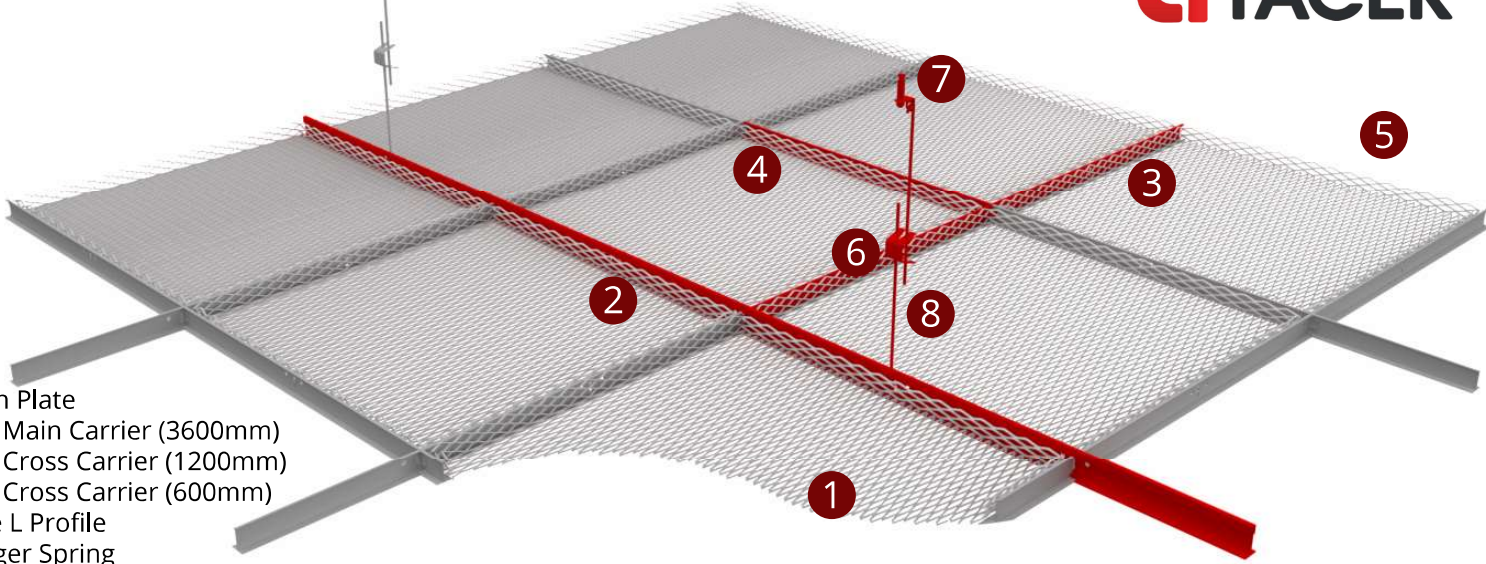




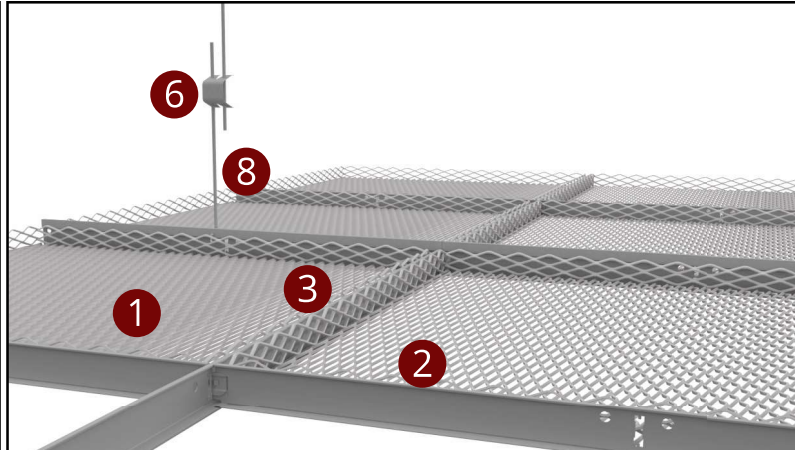
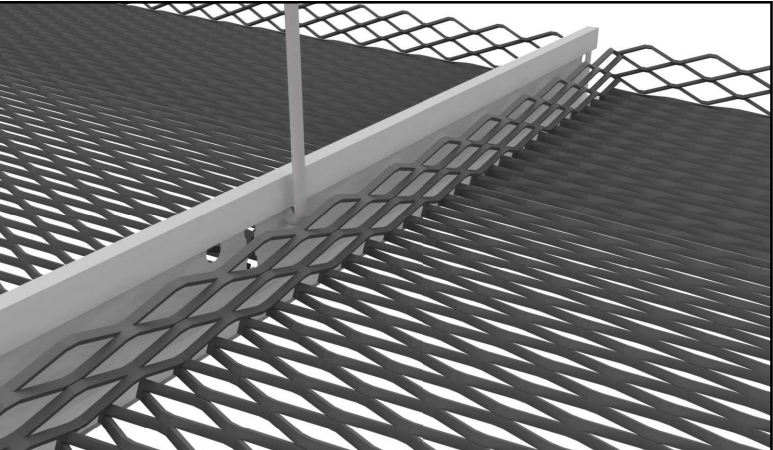
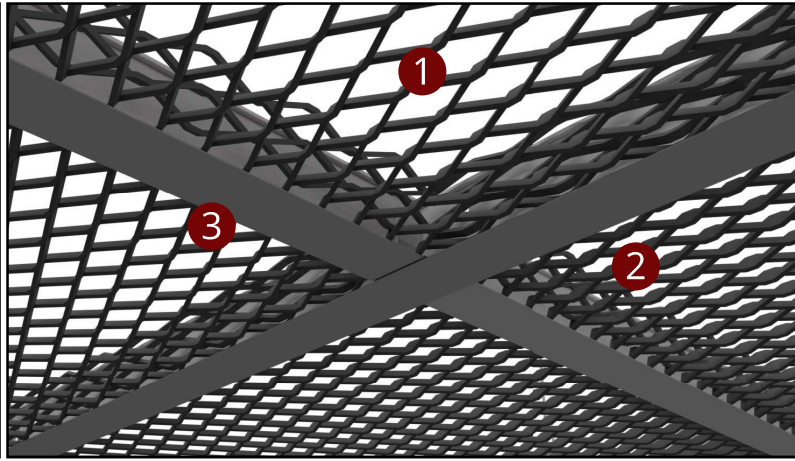
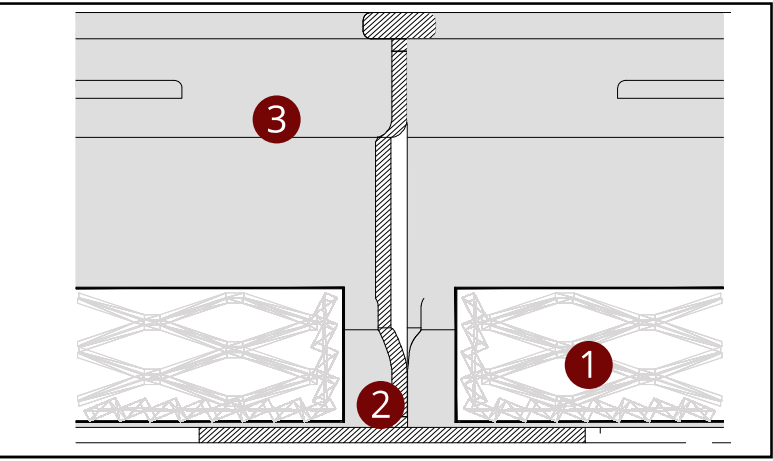
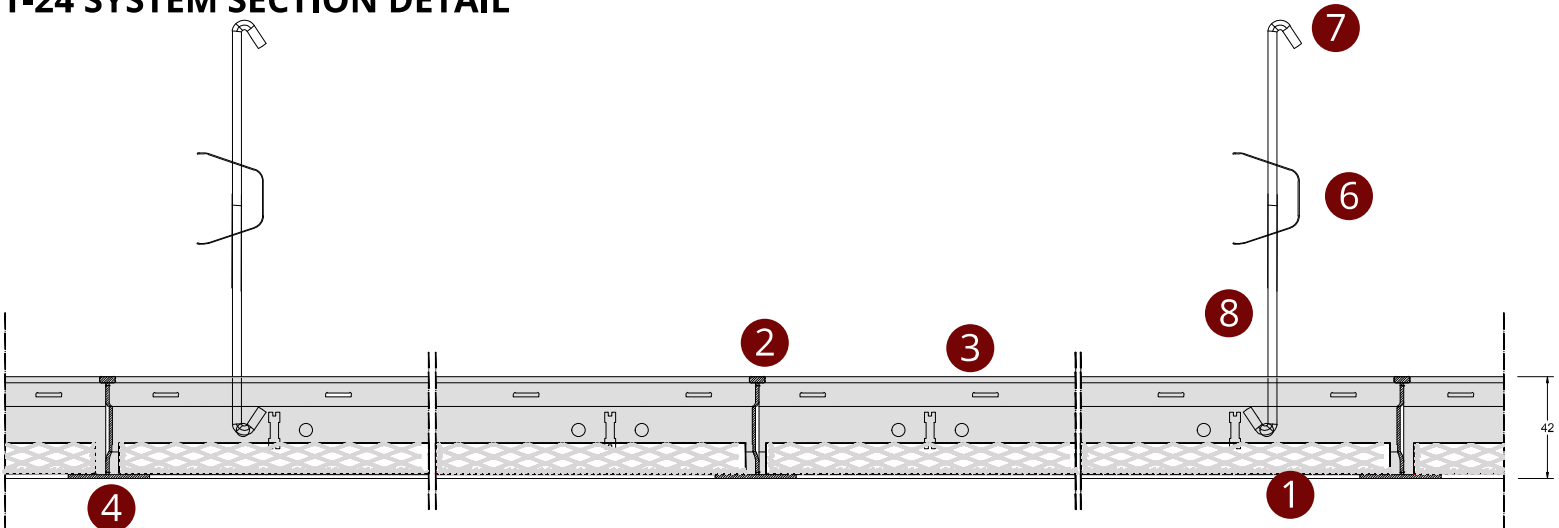
**MESH**

# SYSTEM VIEW



- 1 Mesh Plate
- 2 T-24 Main Carrier (3600mm)
- 3 T-24 Cross Carrier (1200mm)
- 4 T-24 Cross Carrier (600mm)
- 5 Edge L Profile
- 6 Hanger Spring
- 7 Steel Screw
- 8 Hanger Wire (3000mm)

# T-24 SYSTEM SECTION DETAIL





↔ EBAT  
↕ SIZE

🔥 YANGIN SINIFI  
FIRE PERFORMANCE

♻️ GERİ DÖNÜŞÜM  
RECYCLED CONTENT

🔊 SES EMİLİMİ  
SOUND ABSORPTION (NRC)

🏠 YÜZEY  
SURFACE

🏋️ SİSTEM AĞIRLIĞI  
SYSTEM WEIGHT

🔧 PERFORASYON  
PERFORATION

🏆 KALİTE BELGESİ  
QUALITY

## CONTACT



tacerakustik



tacerakustik



tacerinsaat



tacerakustik

### Head Office:

Birlik Mah. 450.Cad. No:79/B Çankaya/Ankara/TURKEY 06610  
Tel: +90 312 496 11 05

### Izmir Office:

Ege Perla Çınarlı Mah. Ozan Albay Cad. No:10 Kat:6  
Konak/Izmir/TURKEY 35170  
Tel: +90 232 472 06 43

### Factory 2:

O.S.B. Kızılırmak Cd. 1. Sk. No:15 Yahşiyân/Kırıkkale/TURKEY 71450  
Tel: +90 318 321 33 50

### Istanbul Office:

Esen-tepe Mah. E-5 Yan yol Kelebek Sk. Marmara Kule No:17 Kat:12  
Kartal/Istanbul/TURKEY 34870  
Tel: +90 216 469 44 84

### Factory 1:

Esenboğa Yolu 22 km. Saracalar Mah. Kümeevler Sk. No:46  
Akyurt/Ankara/TURKEY 06750  
Tel: +90 312 399 25 45

### Factory 3:

Ostim Fabrika İvedik Org. San. Genç Kardeşler Sitesi 1468. Cad. 2286. Sok.  
No:44-46-48-50  
Ostim/Ankara/TURKEY 06378  
Tel: +90 312 395 27 36